

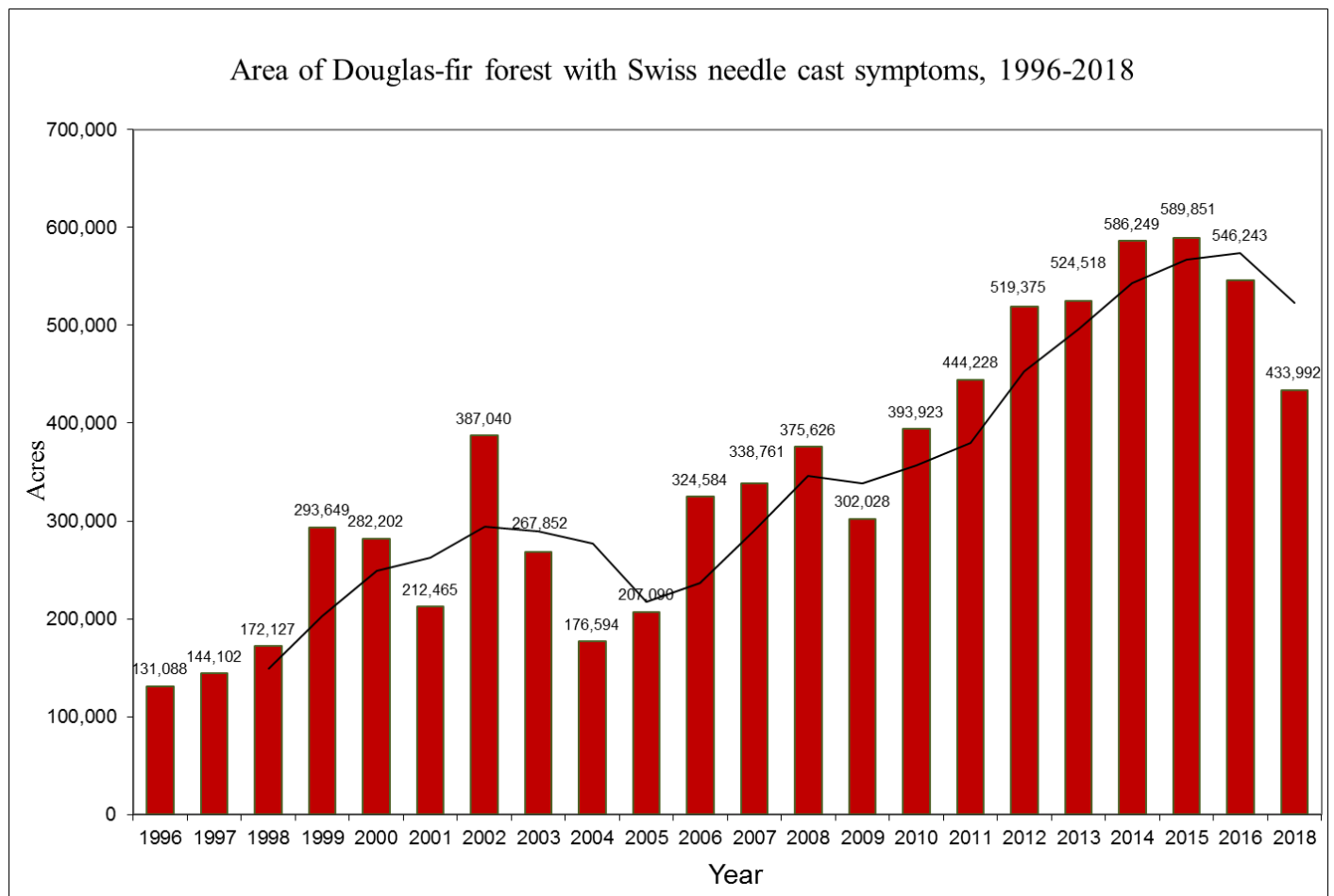
# 2018 Swiss Needle Cast Aerial Survey

Sarah Navarro and Danny Norlander

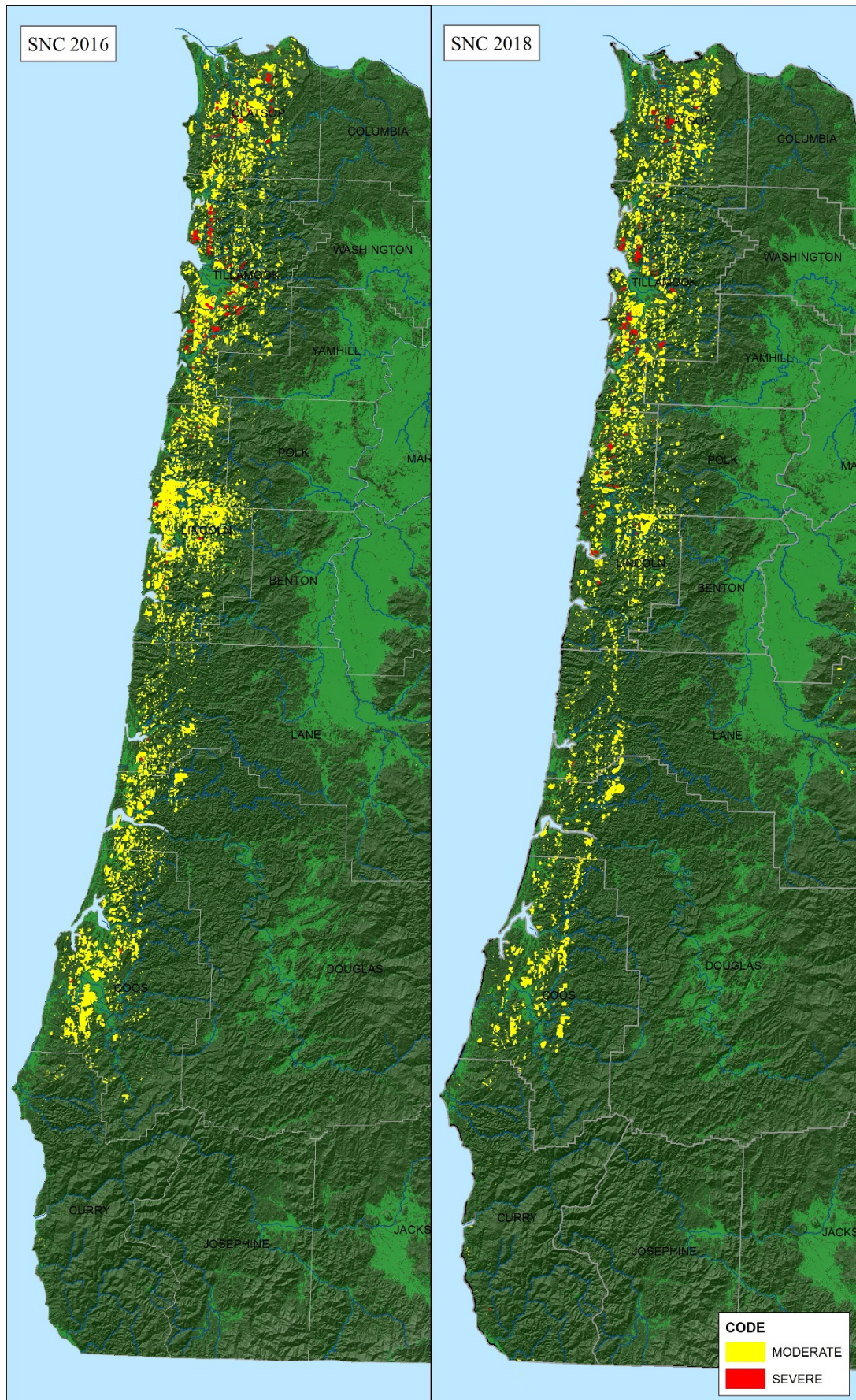
Oregon Department of Forestry

## UPDATE

- The survey was flown on May 3, 7, 23, 30, and June 5 and 7 2018 using ODF Partnavia.
- New DMSM was used by aerial observers- D. Norlander, W. Williams, C. Buhl, and S. Navarro.
- In the Coast Range- 433,992 acres of Douglas-fir forest with SNC symptoms were mapped. (Figures 1 and 2)
- In the Cascades Range- 7,247 acres of moderate SNC symptoms were detected.
- **More detailed and completed survey information will be presented at the Fall SNCC Meeting.**



**Figure 1.** Area of Douglas-fir forest in western Oregon with symptoms of Swiss needle cast detected during aerial surveys conducted in April-June, 1996-2018 (2008 area estimated from partial survey consisting of 3 sample blocks). Trend line is 3-year rolling average. Coast Range, Oregon



**Figure 2.** Areas of Douglas-fir forest with symptoms of Swiss Needle Cast detected in the 2016 and 2018 aerial surveys, Coast Range, Oregon.