

Swiss Needle Cast Aerial Survey 2014



Bob Schroeter (USFS)



Rob Flowers (ODF)



Pilot: Steve Larsen (ODF)

SNC Aerial Survey 2014

April 29, 30; May 1,7,12,13,14

Excellent weather and symptoms
during survey

Area surveyed:

Oregon: 3,765,590 acres

California: 778,318 acres

\$20,425 (N9000V,Plane & pilot);
38 hours survey, 5 hours ferry.

Prolonged wet spring weather in
preceding years (2012 & 2013)

Oregon Swiss Needle Cast Aerial Survey 2014

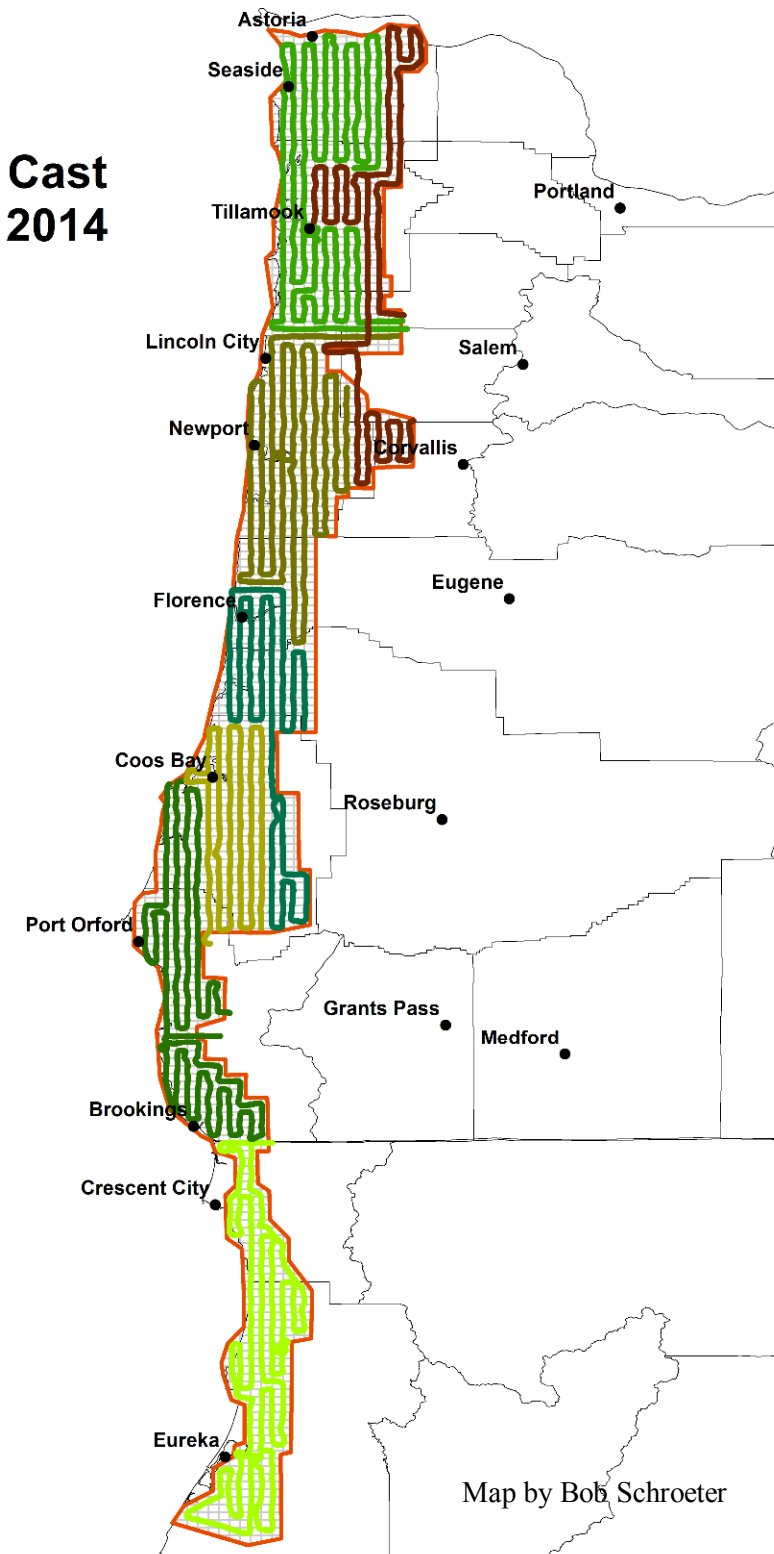
Legend

Survey flight date

- april 29
- april 30
- may 01
- may 07
- may 12
- may 13
- may 14

Swiss Needle Cast
survey boundary

2 mile survey grid













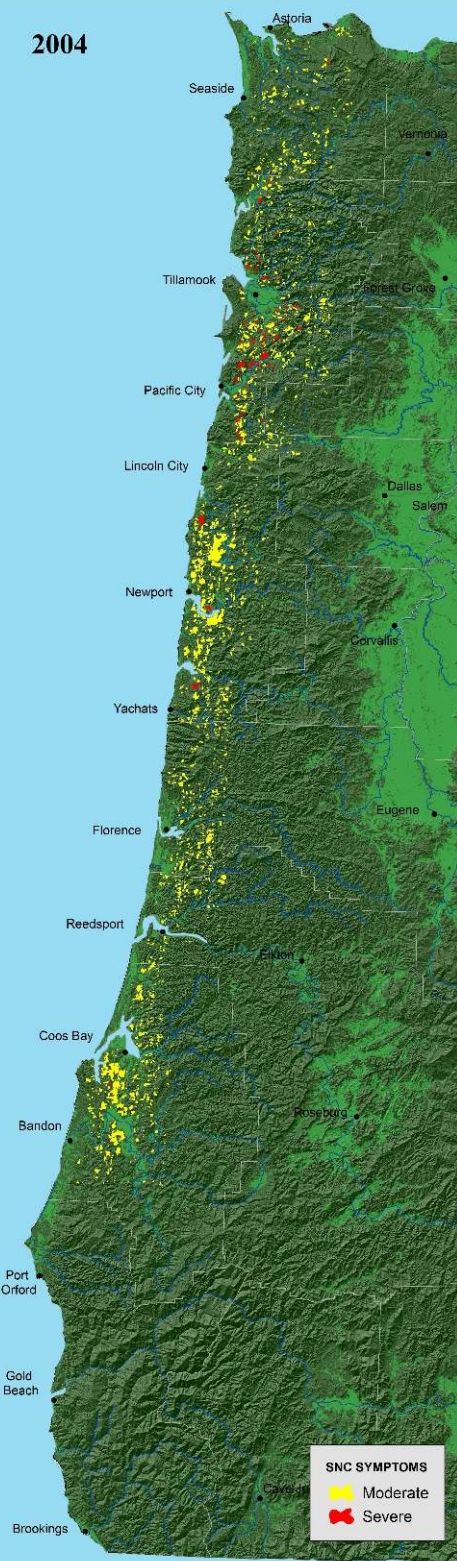
Flowers and Schroeter, 2013



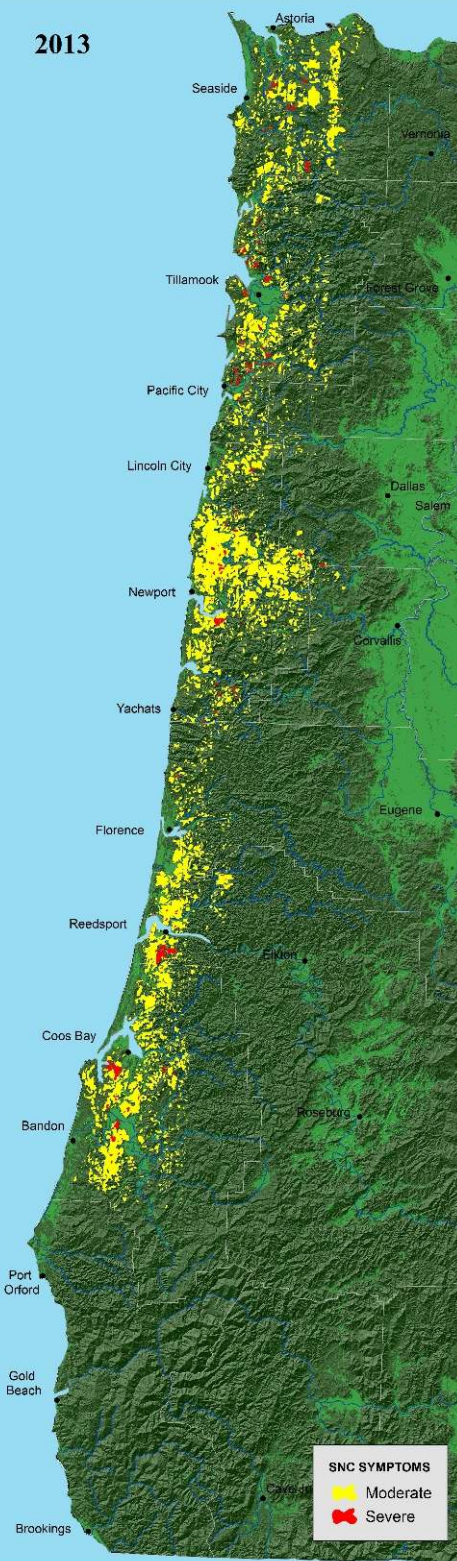
1996



2004



2013



2014

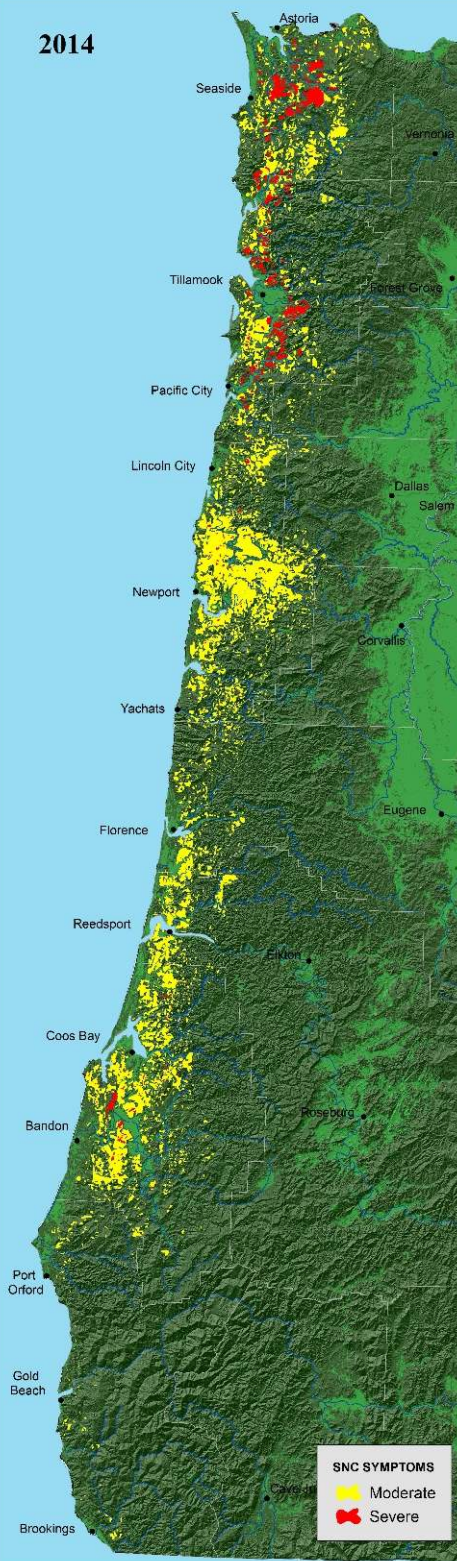


Figure 2. Area of Douglas-fir forest with Swiss needle cast symptoms detected by aerial surveys, Coast Range, Oregon, 1996-2014. Trend line is 3-year mean.

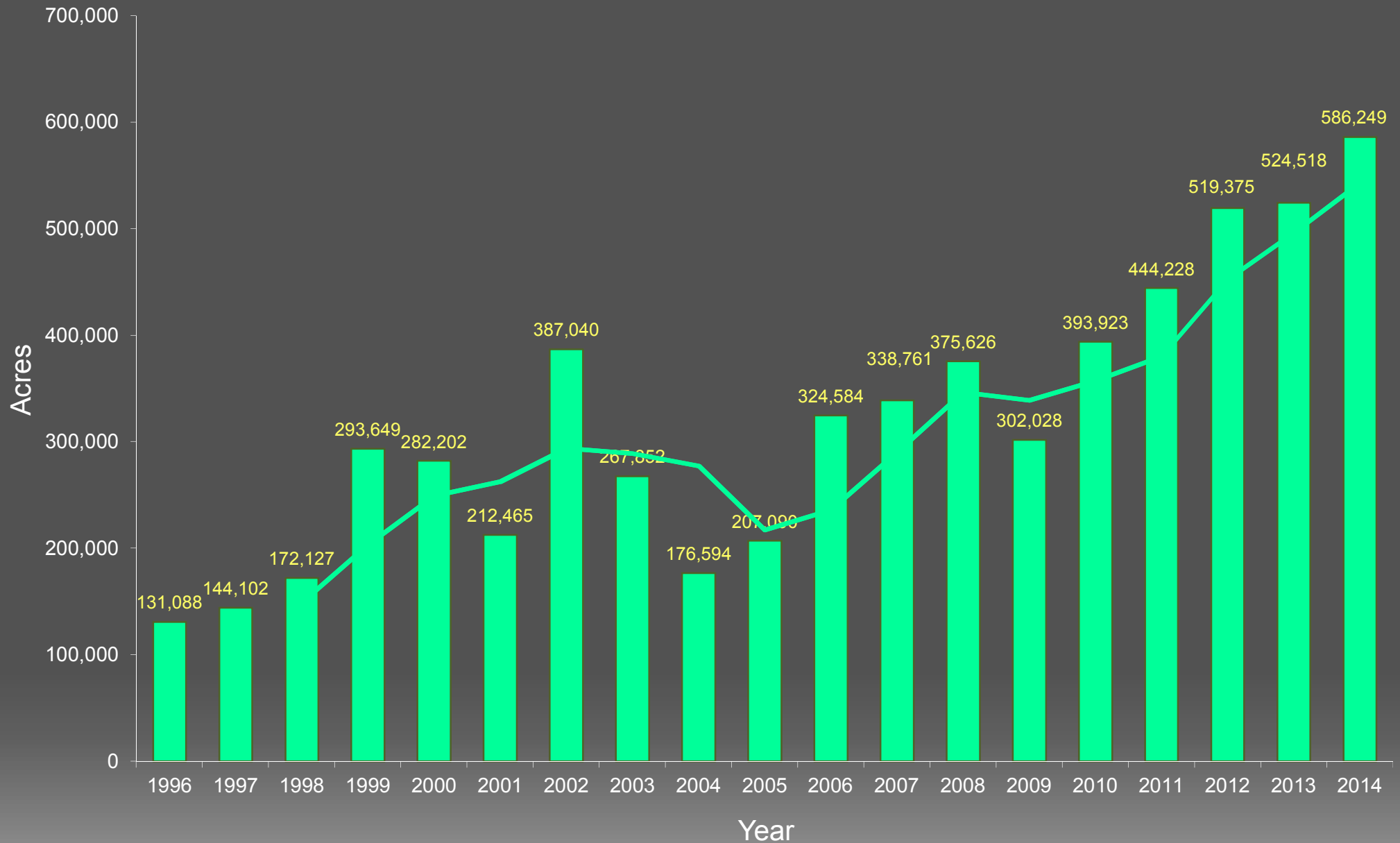
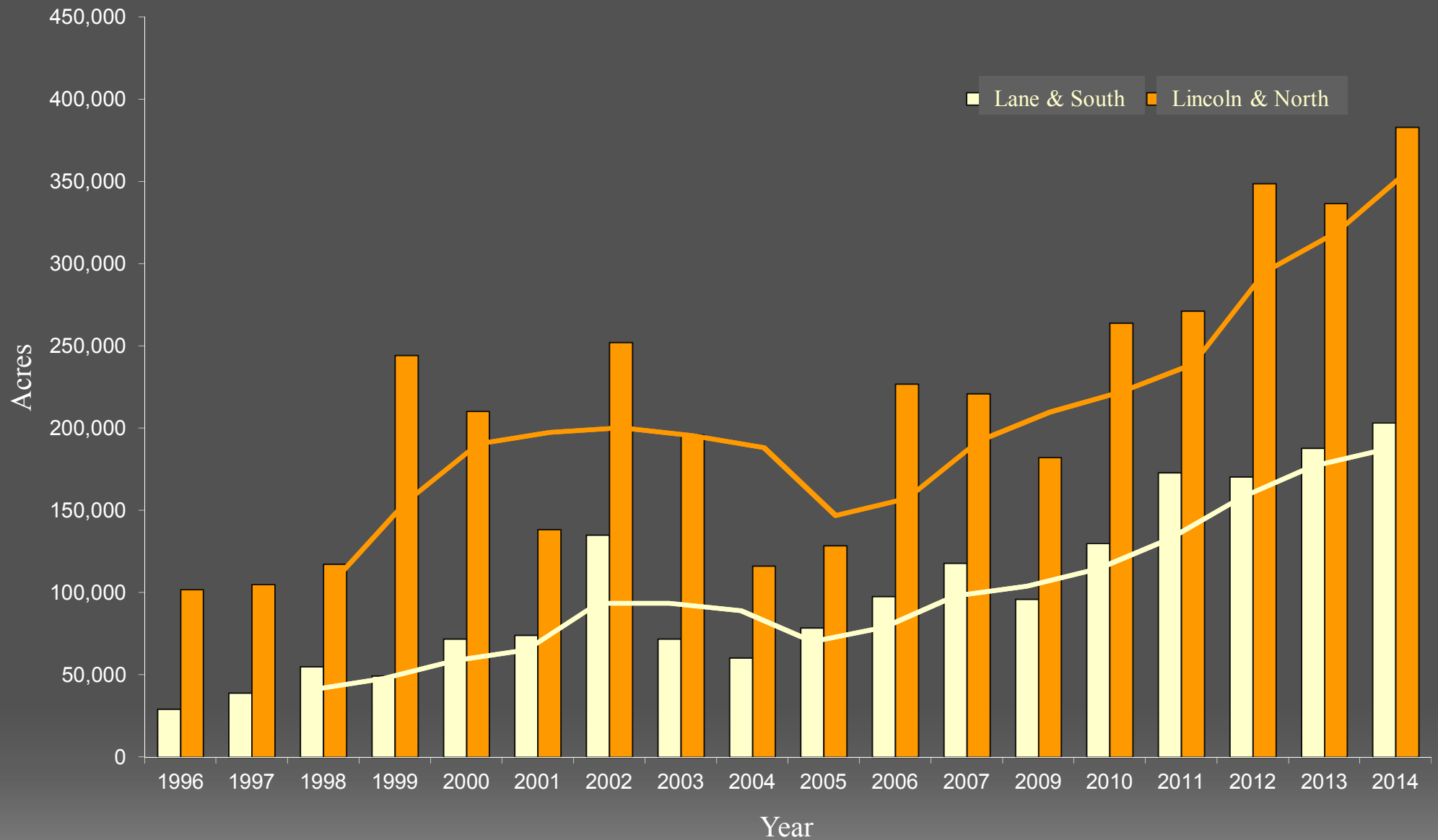
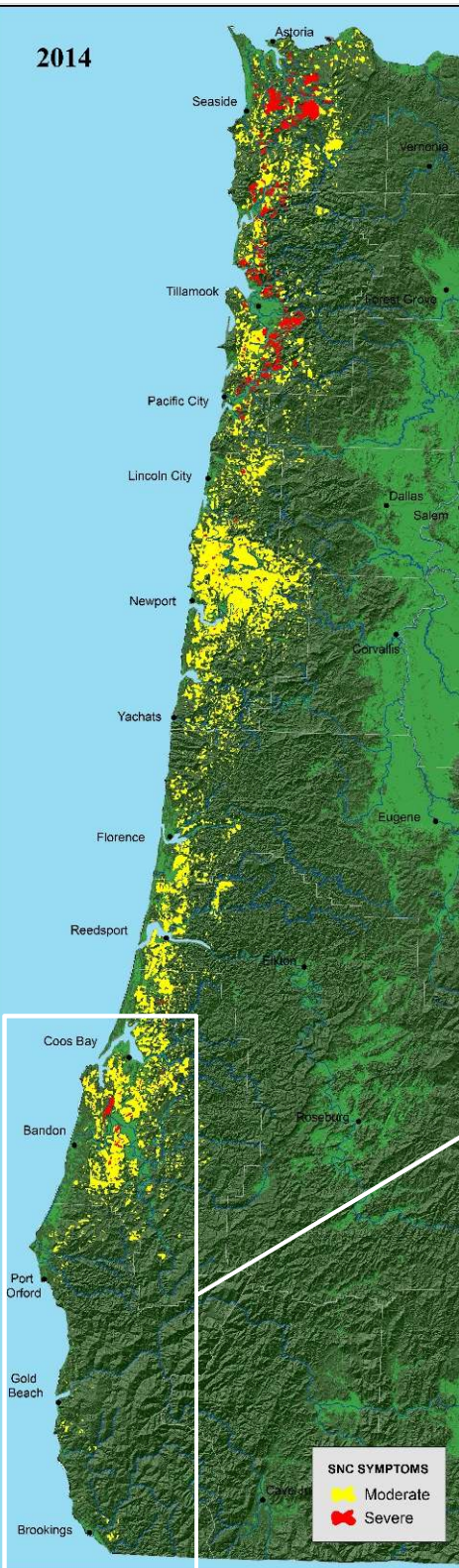


Figure 3. Area of Douglas-fir forest with Swiss needle cast symptoms detected by aerial surveys, Coast Range, Oregon, 1996-2014. Trend line is 3-year mean.



2014



2014



CURRY COUNTY

- 96 polygons
- 7,362 acres
- Ground checked 13 polygons
- SNC present in all, but not always damaging.

POLYGON	STAND COLOR	STAND SNC RATING	MEAN FOLIAGE RETENTION (10 TREES)
12	2	2	2.4
11	2	3	3.3
5	3	3	2.7
6	2	2	2.5
9	2	3	2.0
10	3	3	2.3
14	3	2	3.1
15	2	2	3.7
17	3	3	2.4
19	3	3	2.0
18	2	3	2.2
2	2	2	4.2
1	2	3	2.3
MEAN	2.4	2.6	2.7

California Swiss Needle Cast

Aerial Survey, 2014

No significant SNC disease observed.

- 3 polygons (94 acres) mapped in Humboldt and Del Norte Counties
 - Two at Oregon border (weak signature, not ground-checked)
 - One in northern Humboldt (ground-checked, not SNC)

Del Norte County



Flowers and Schroeter, 2014





