

**SWISS NEEDLE CAST COOPERATIVE  
2016 ANNUAL MEETING**

**WEDNESDAY NOVEMBER 30, 2016**

**Peavy Arboretum Forestry Club Cabin**

**2016 ANNUAL SCIENCE REVIEW**

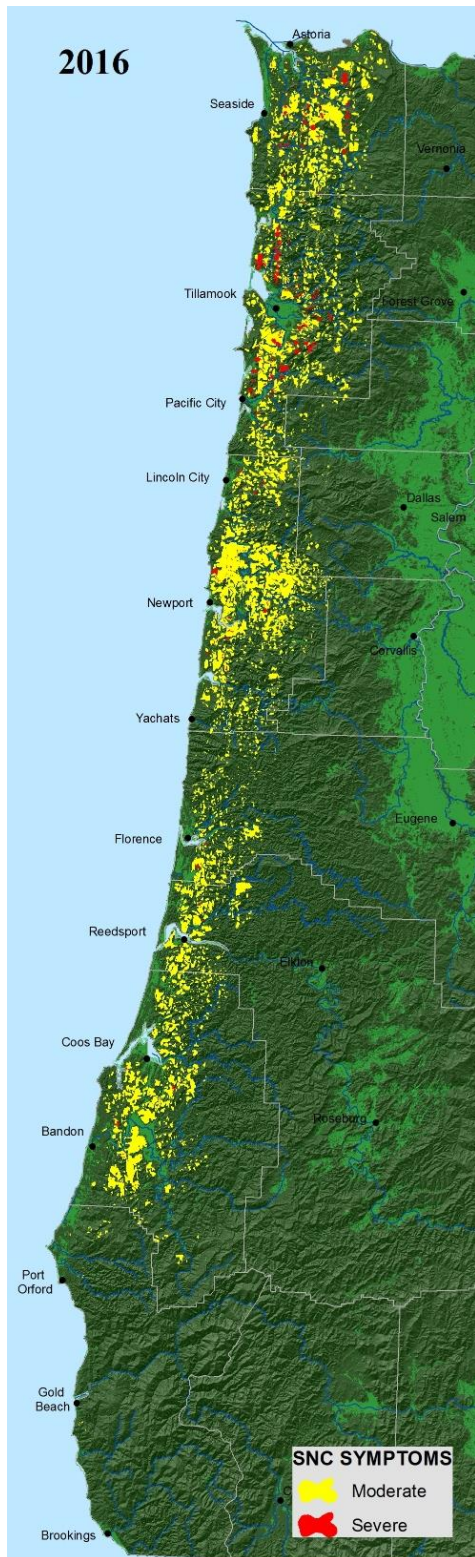
**8:00 – 12:00**

**LUNCH 12:00 – 13:00**

Special Presentation: Jared LeBoldus on Black stain, *Rhizoctonia*, and  
*Phytophthora pluvialis*.

**BUSINESS MEETING: Members and Guests Only.**

**13:00 – 16:00**



8 am – Welcome and Introductions.

8:15 – 8:30. Ritokova/Shaw. SNC Research and Monitoring Plot Network update.

8:30 – 9:00. Navarro/Norlander: Oregon Aerial Survey Results. Omdal/Ramsey: Washington Aerial Survey Results.

9:00 – 9:20. Jonathan Burnett. Aerial detection work with drones.

9:20 – 9:40. Dixie Daniels. Environmental effects on endophyte communities in four Douglas-fir progeny sites: preliminary results.

9:40 – 10:00. Patrick Bennett. Relationship Between SNC Severity and Geographic Distributions of *P. gaeumannii* Lineages

10:00 – 10:15. BREAK

10:15 – 10:35. Jeff Hatten. Soils in the Coast Range, SNC connections?

10:35 – 10:55. Sky Lan. Comparing old and young DF in Coast Range and Cascades for SNC Severity.

10:55 – 11:10. Mainwaring/Maguire. Changing Taper of SNC infected trees, 1998-2015.

11:10 – 11:30. Chris Still. Just dew it: measuring and modeling dew formation.

11:30 – 12:00. Connie Harrington. What I don't know about *Phaeocryptopus* infection and response of Douglas-fir foliage. Group discussion.