

# 2022 Oregon Swiss Needle Cast Aerial Survey

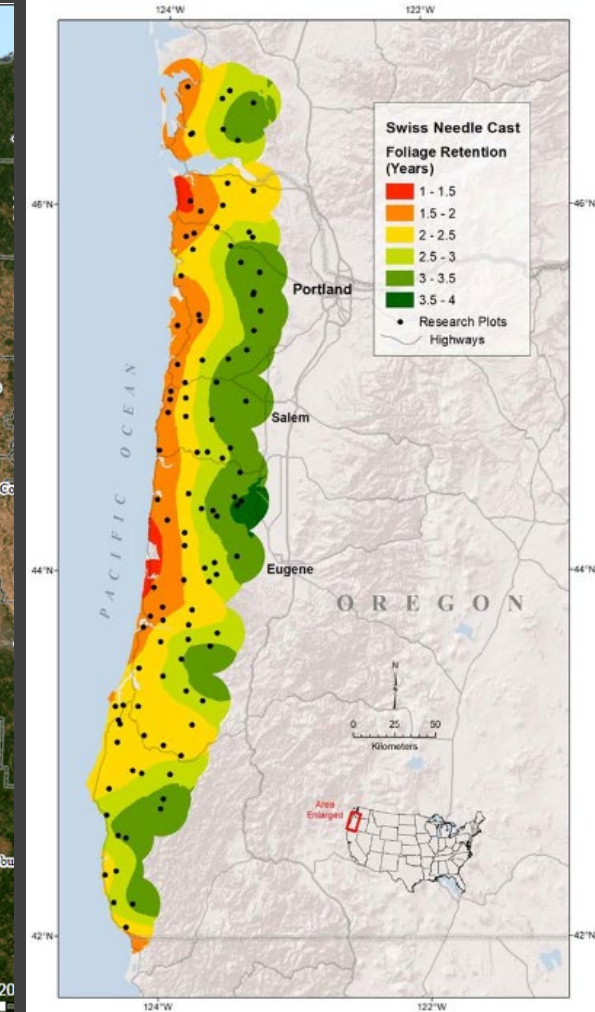
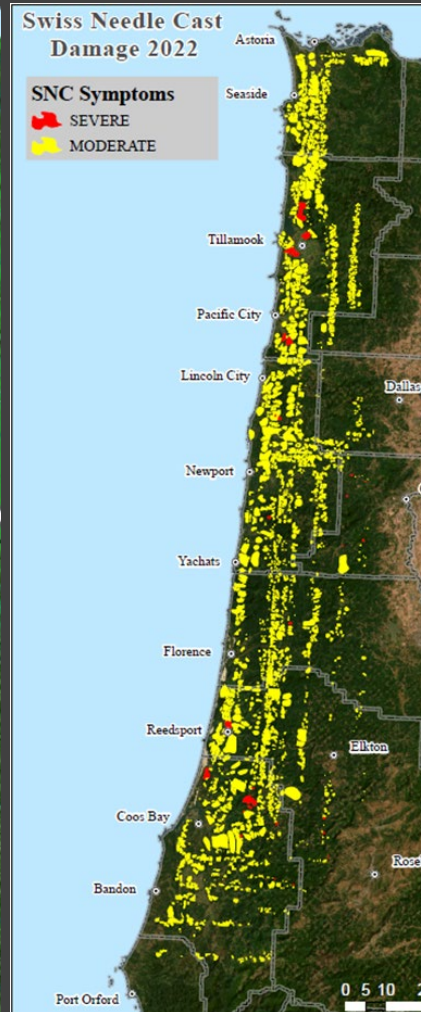
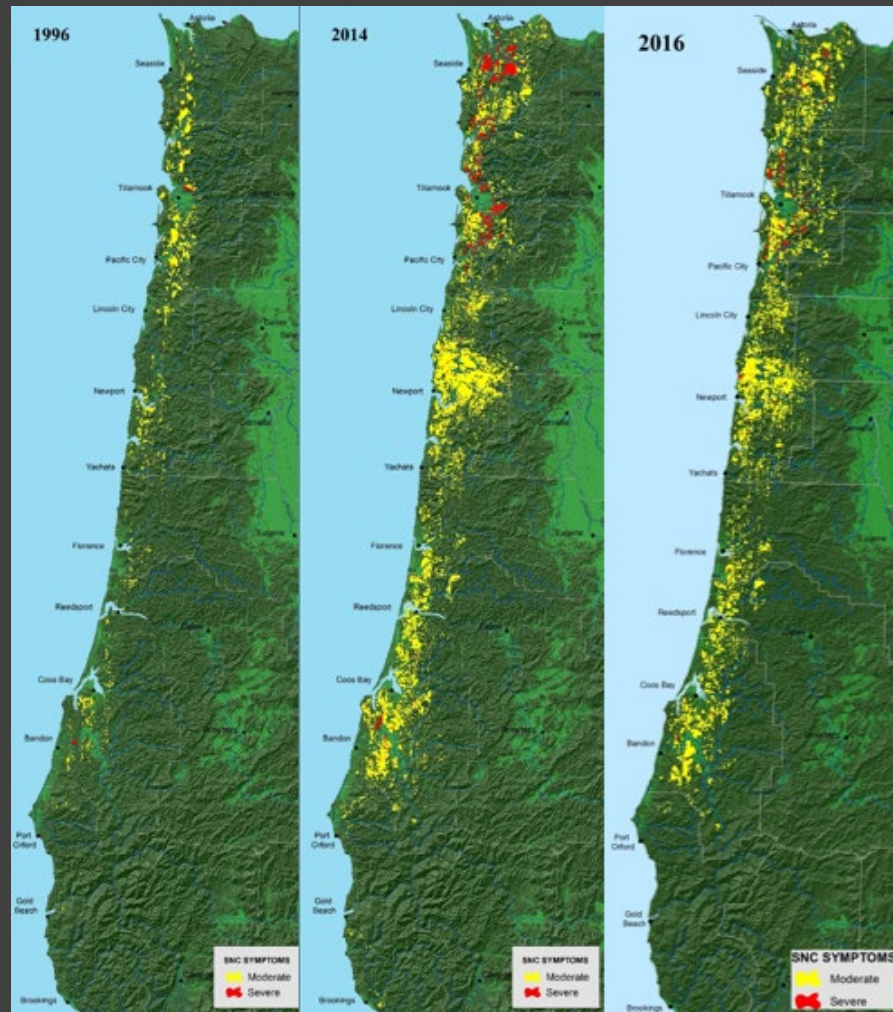
Gabi Ritokova (ODF)  
Christine Buhl (ODF)  
Sarah Navarro (ODF)



Pilot: Dan McCarron (ODF)

# Identification, regional or landscape level

- The fungus causing SNC likes moist spring and early summer weather and mild winter temps



# **SNC Aerial Survey 2022**

**June 1, 2, 8**

**Symptoms on track**

**Survey delayed due to weather,  
staffing shortage, airplane  
maintenance, and contract delays**

**Area surveyed:**

**Coast Range: ~3,700,000 mil acres**

**Cost: \$13,850**

<https://usfs.maps.arcgis.com/apps/webappviewer/index.html?id=4e8942d26ee84750bcea4198d92f3>

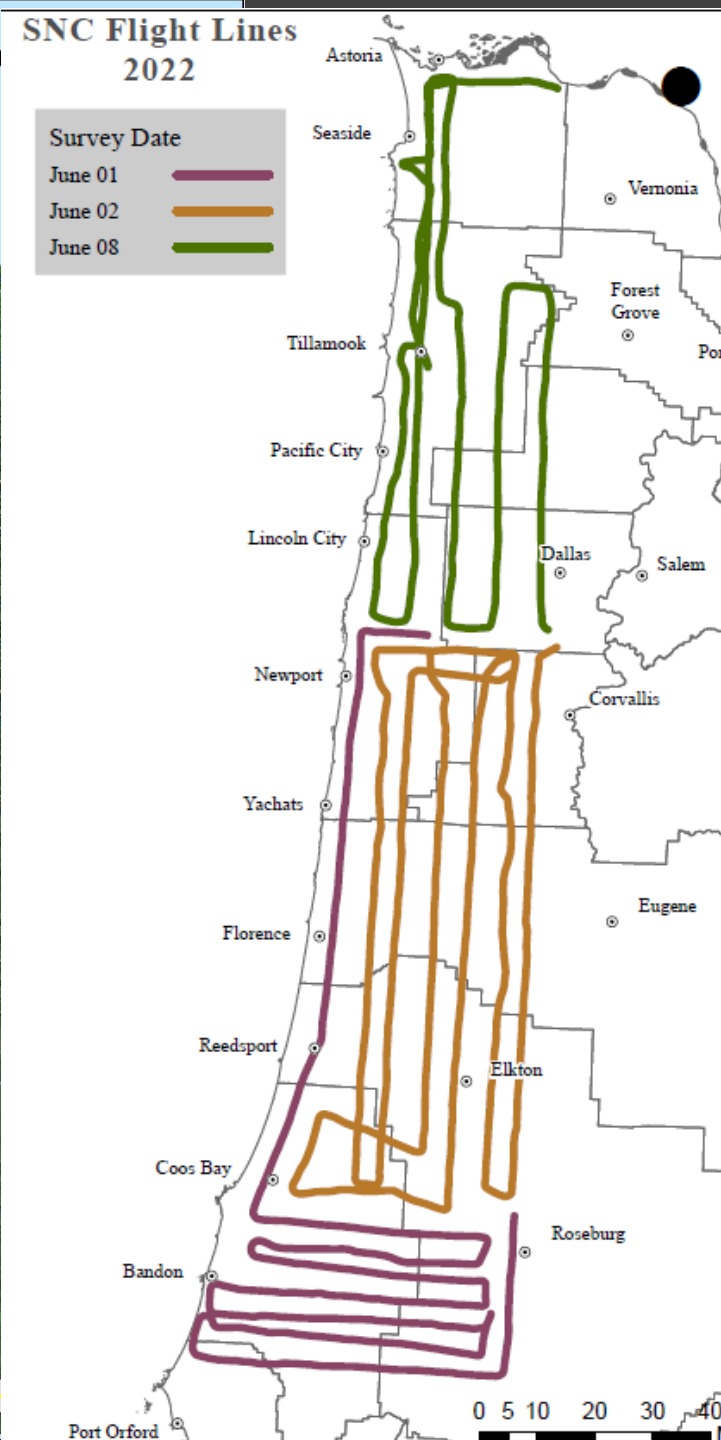
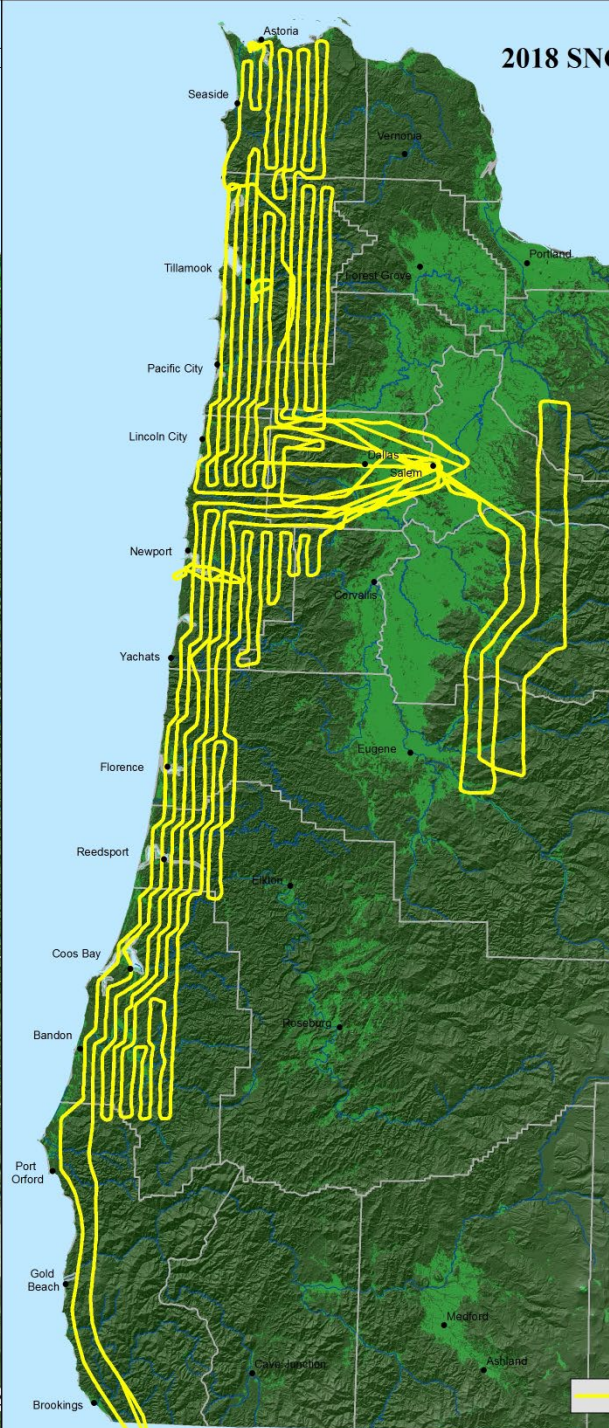
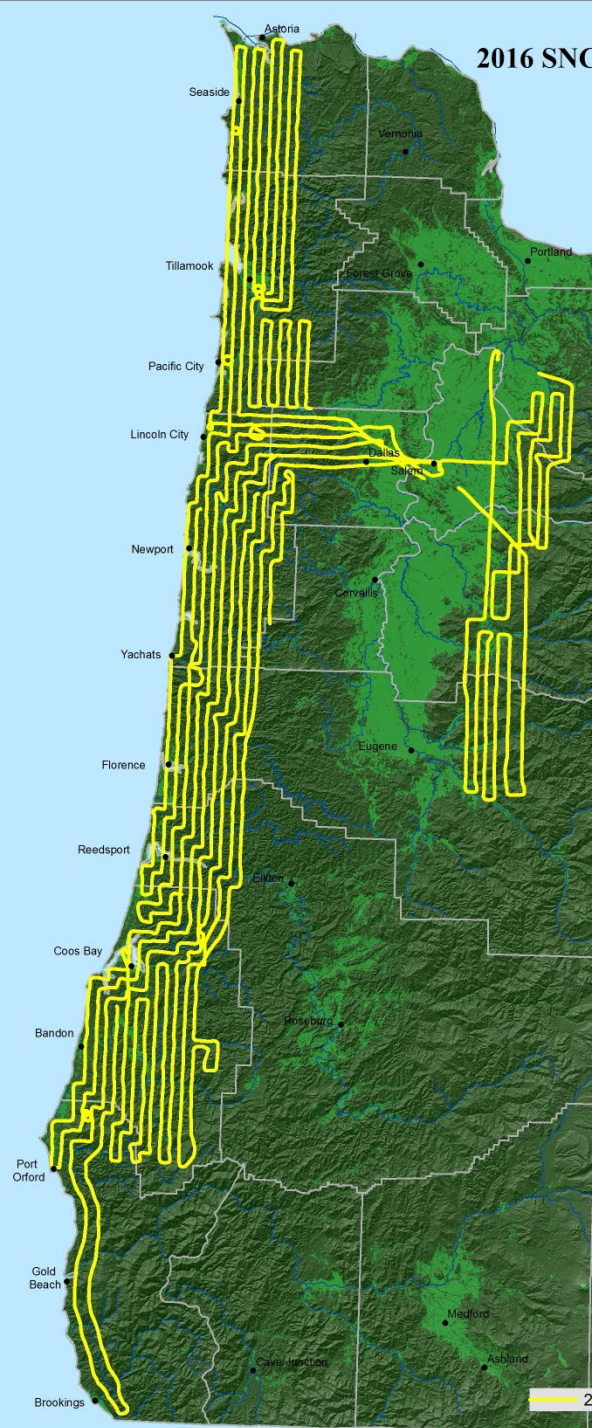
<https://usfs.maps.arcgis.com/apps/MapJournal/index.html?appid=da5cda5003d24544b9231dbb8edf>





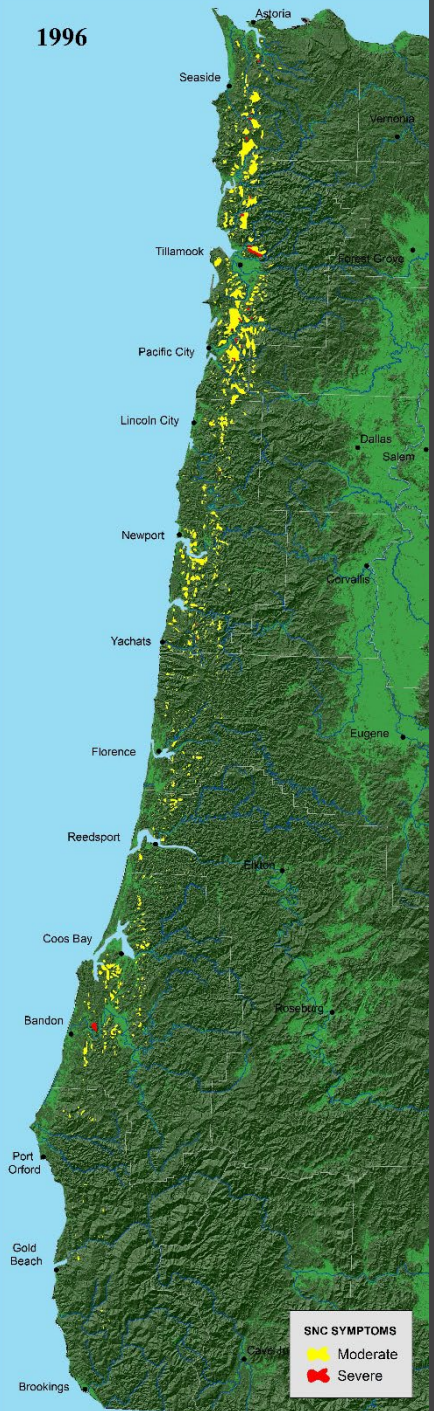




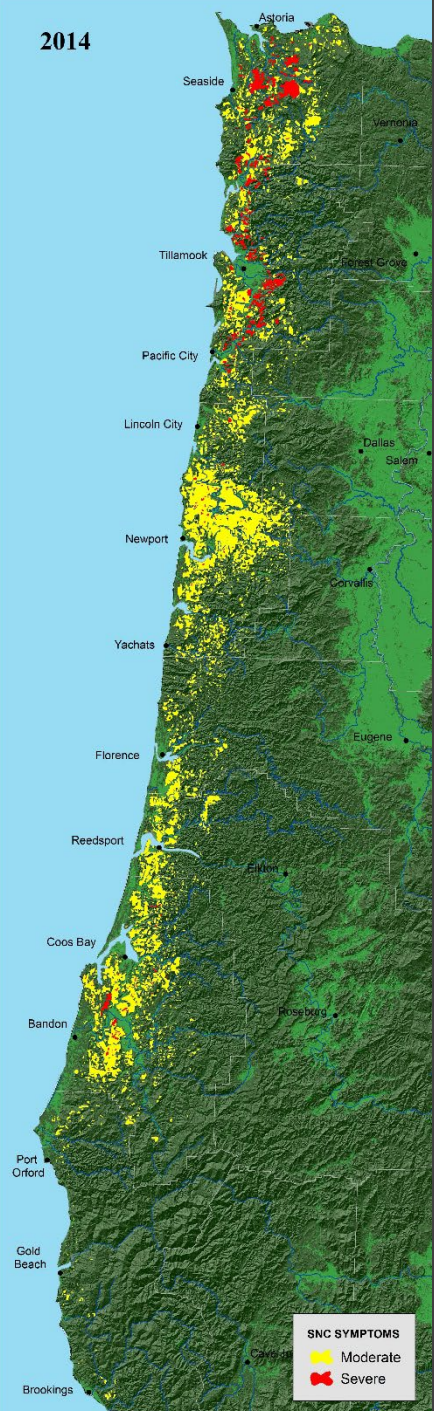




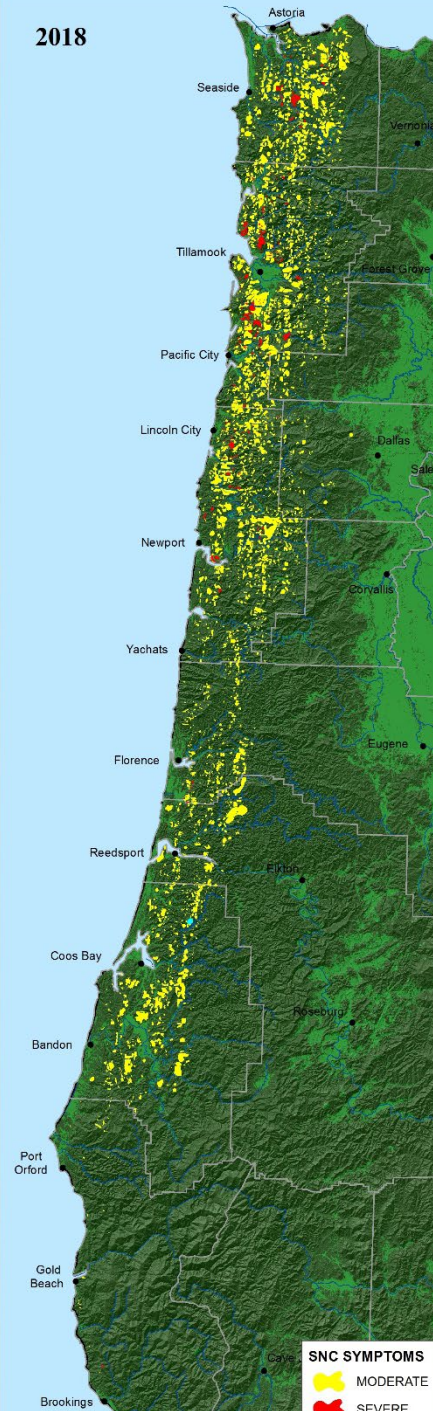
1996



2014

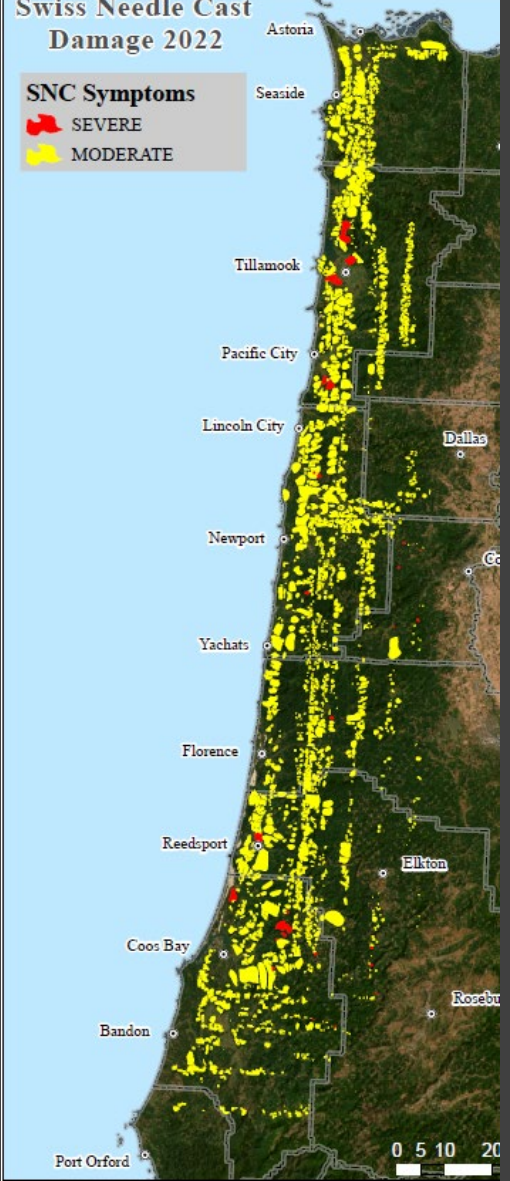


2018



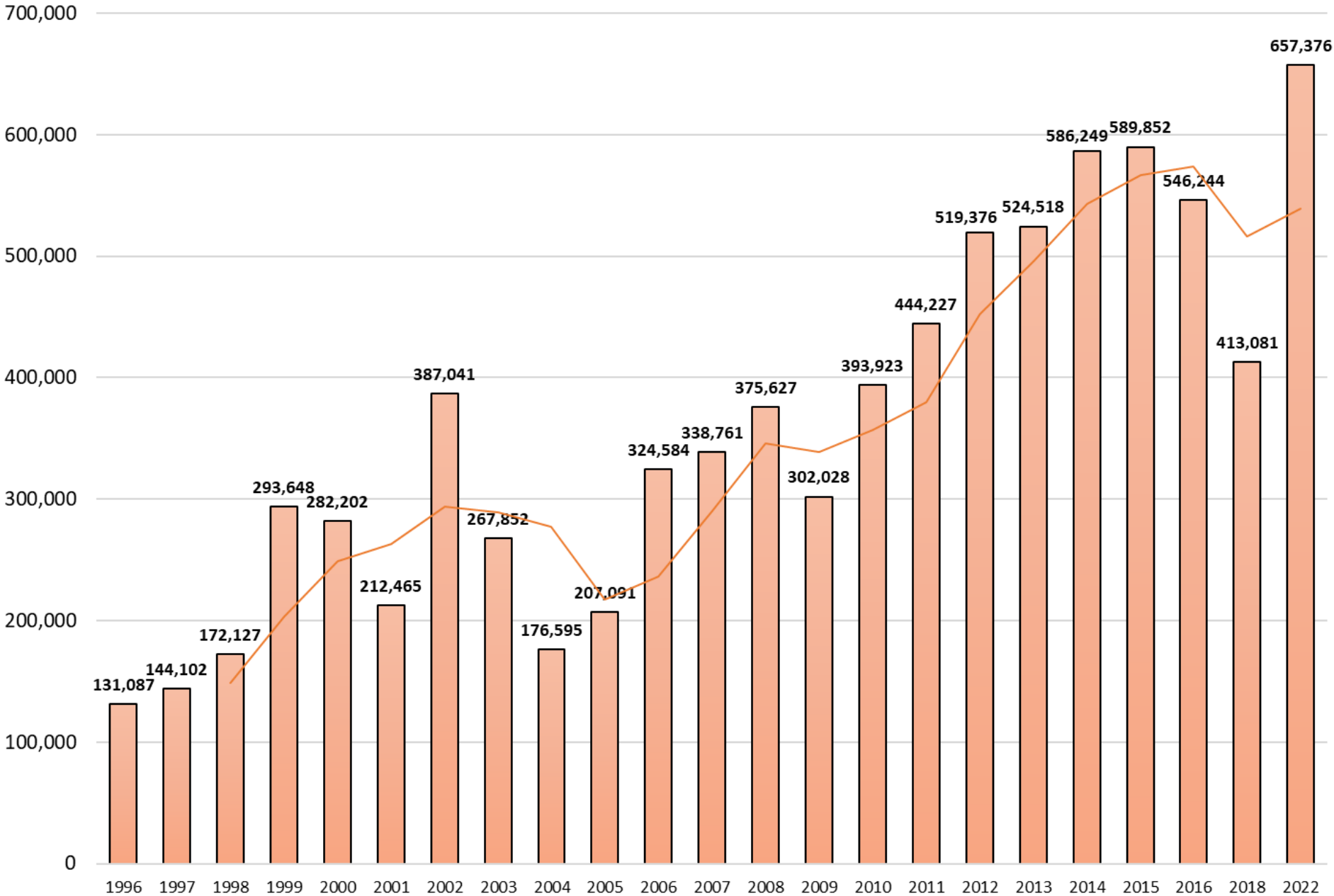
### Swiss Needle Cast Damage 2022

**SNC Symptoms**  
 SEVERE  
 MODERATE

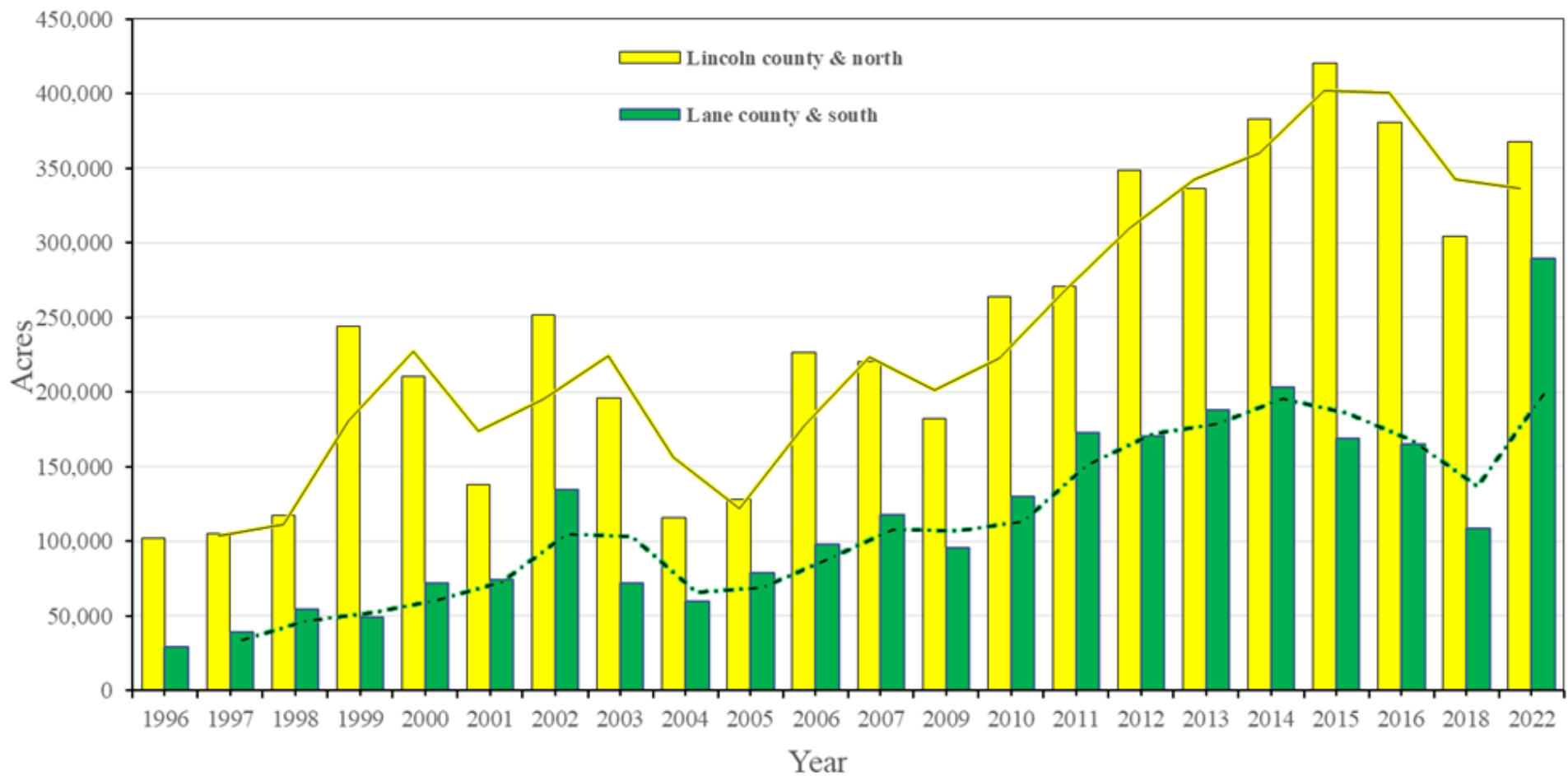


**SNC SYMPTOMS**  
 MODERATE  
 SEVERE

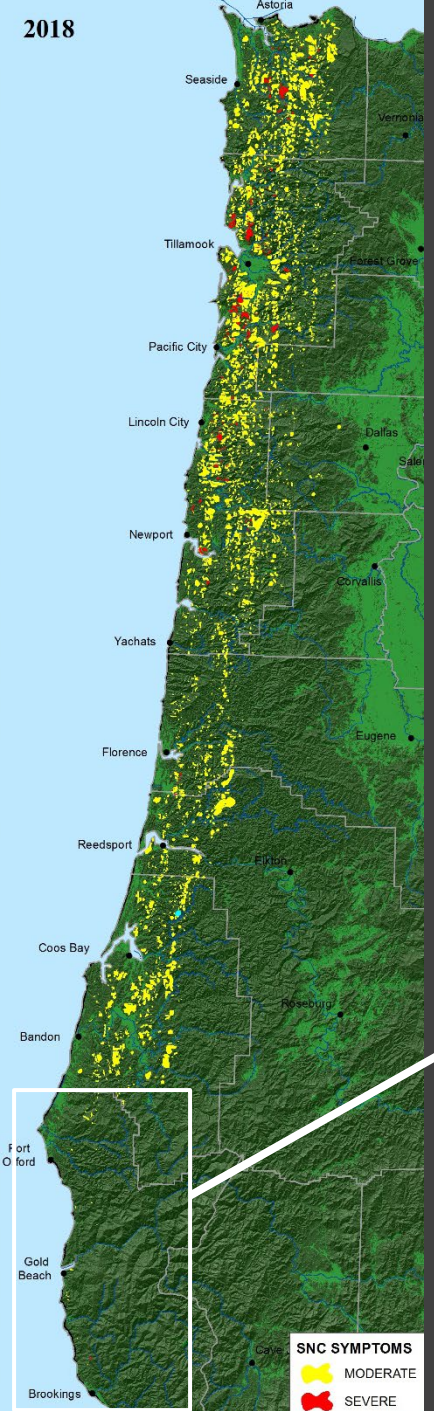
# Area of Doug-fir Forest with SNC Symptoms (Acres)



Area of Douglas-fir forest with Swiss needle cast symptoms, 1996-2022



2018



Port Orford

Gold Beach

Brookings

2018 Swiss Needle Cast

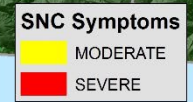
### CURRY COUNTY

- 40 polygons
- 1,860 acres
- Slight increase from 2016

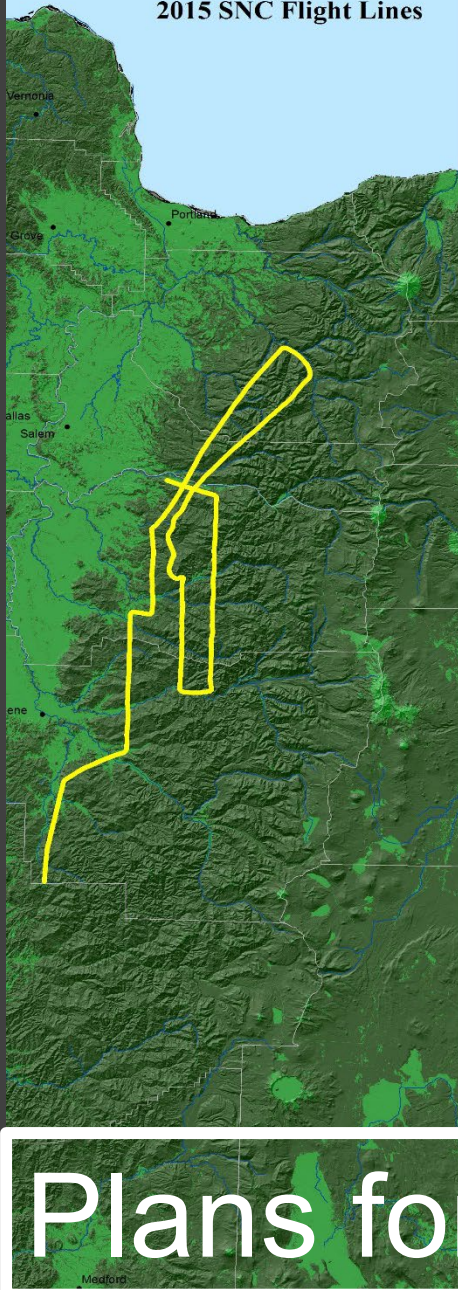
### DEL NORTE COUNTY

- 5 polygons
- 358 acres

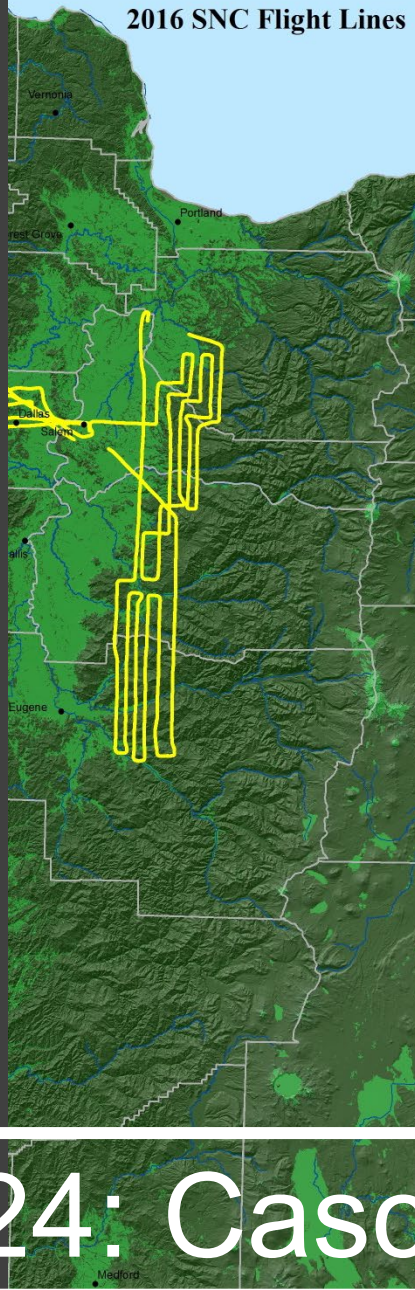
2022 ADS DID NOT  
INCLUDE  
SOUTHERNMOST COAST



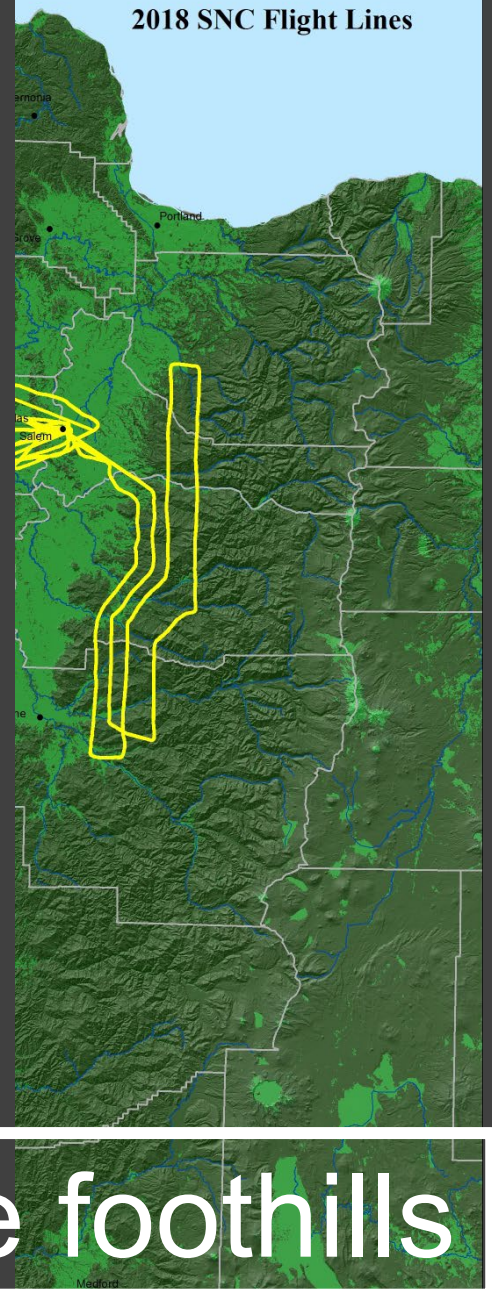
2015 SNC Flight Lines



2016 SNC Flight Lines



2018 SNC Flight Lines



# Plans for 2024: Cascade foothills

2015\_SNC\_Flight\_Lines

2016\_SNC\_Flight\_Lines

2018\_SNC\_FLIGHT\_LINES



**Questions?**